



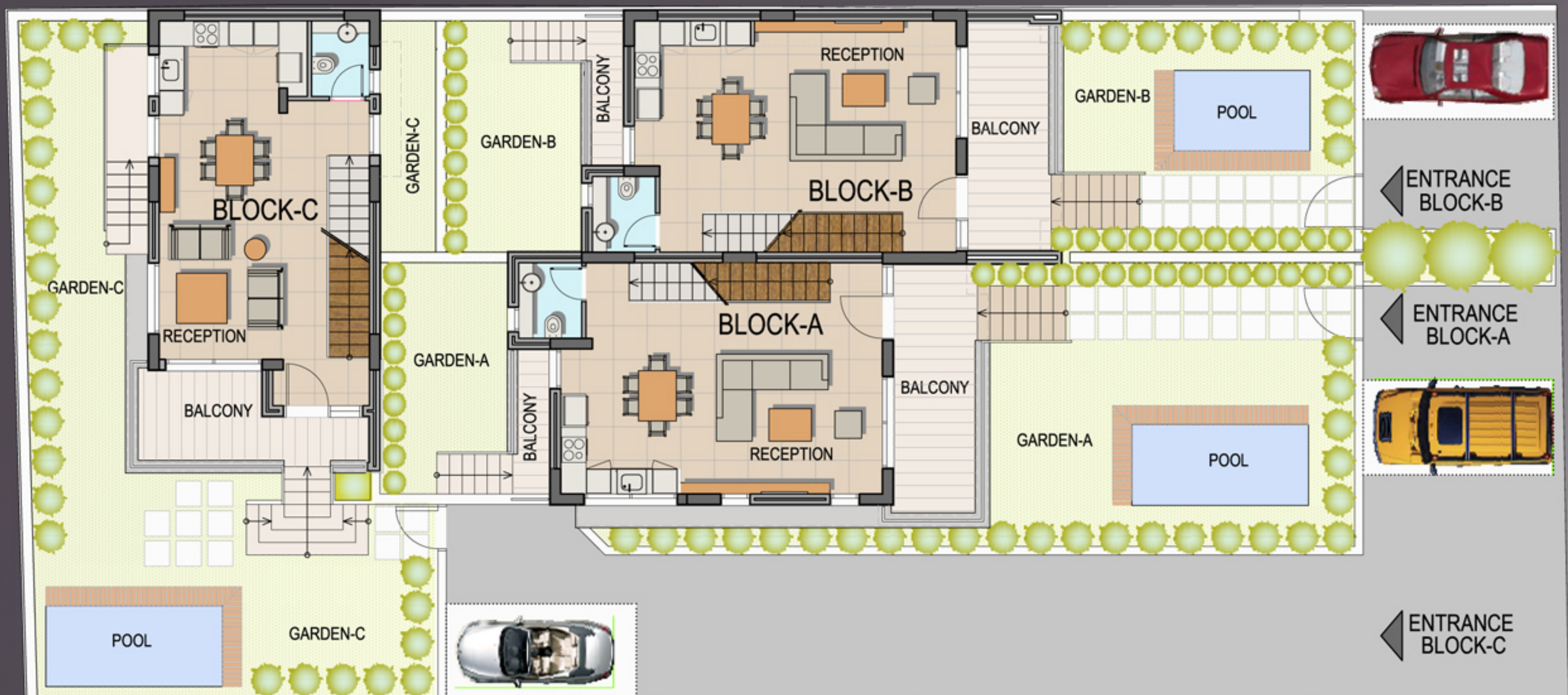
VILLA 'TRIO' LUTRAKI

LUTRAKI VILLA'S NEAR THE SEA



WHILE ENJOYING LUTRAKI
GET A VILLA IN AN EXCLUSIVE AREA
AND YOU WILL HAVE
YOUR EUROPEAN PERMANENT RESIDENCY

HIGH END SPECIFICATIONS



BLOCK A

(152.06 sqm Internal + 37.34 sqm Balcony)
PRIVATE ENTRANCE AND GARDEN
WITH SWIMMING POOL
THREE MASTER BEDROOMS
ROOF TERRACE WITH PERGOLA

BLOCK B

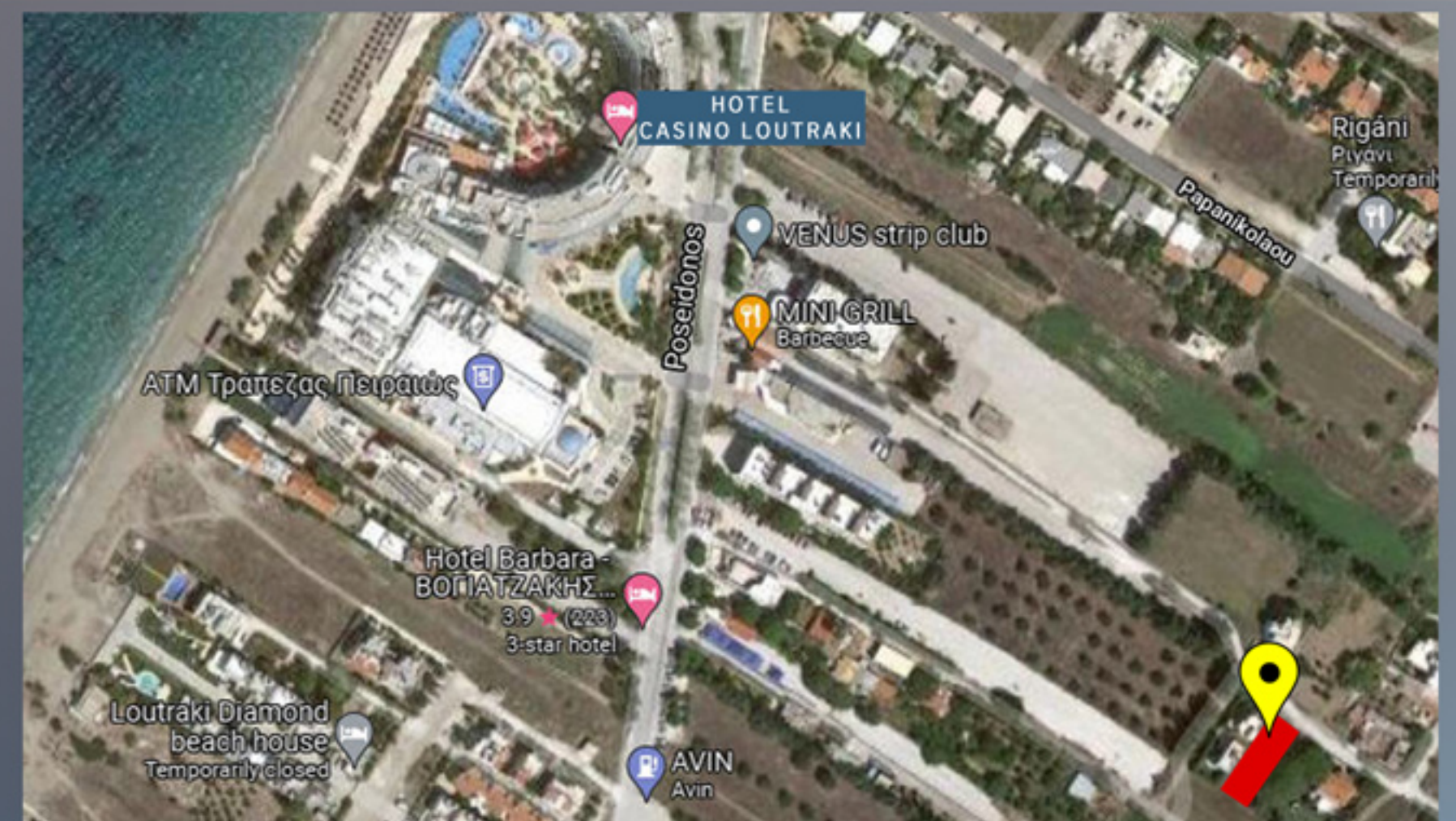
(151.85 sqm Internal + 35.23 sqm Balcony)
PRIVATE ENTRANCE AND GARDEN
WITH SWIMMING POOL
THREE MASTER BEDROOMS
ROOF TERRACE WITH PERGOLA

BLOCK C

(127.94 sqm Internal + 11.16 sqm Balcony)
PRIVATE ENTRANCE AND GARDEN
WITH SWIMMING POOL
TWO MASTER BEDROOMS
ROOF TERRACE WITH PERGOLA

NEW GREECE WAVE

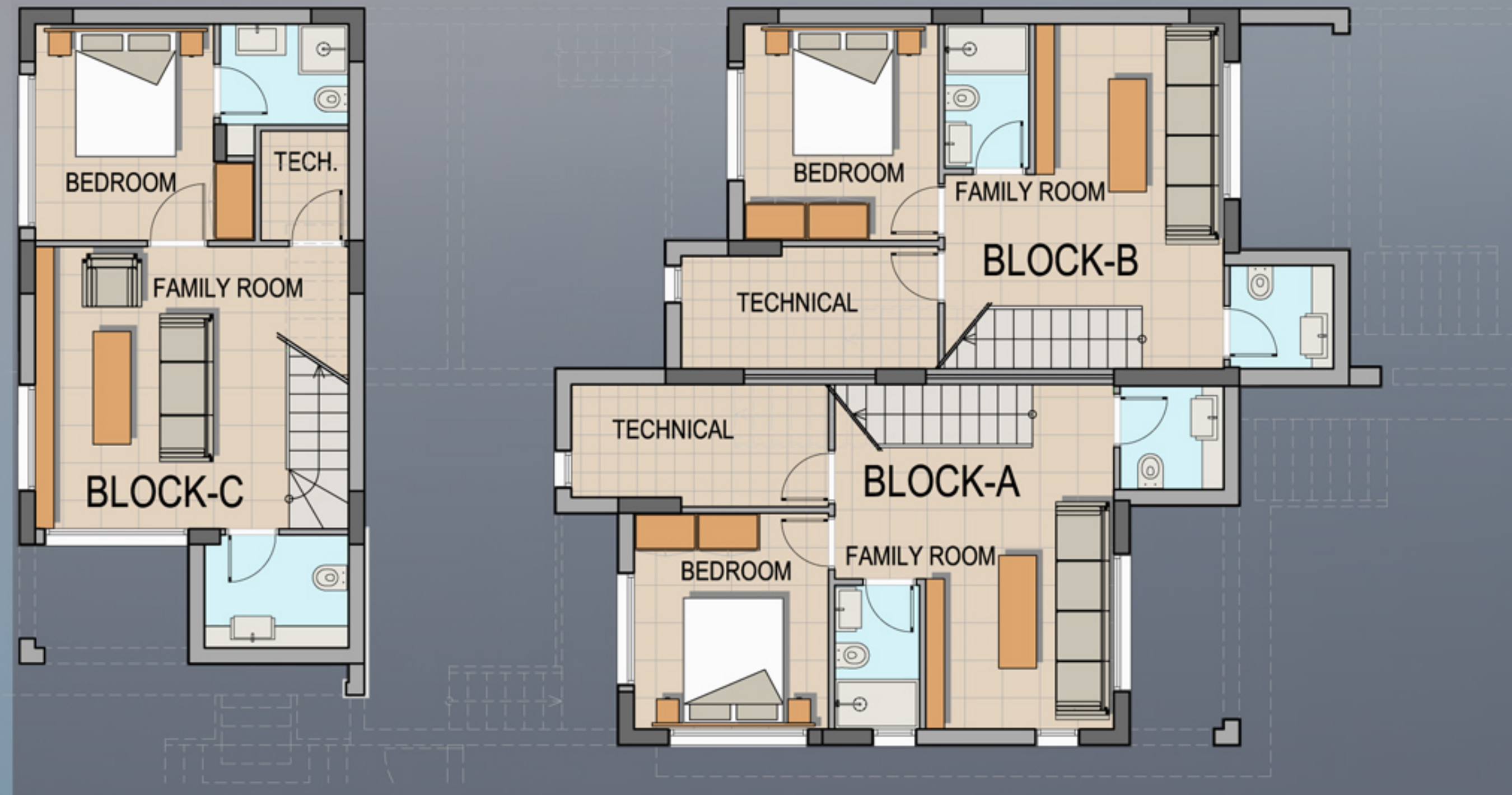
📍 LOCATED IN THE TOWN OF LUTRAKI,
IN AN EXCEPTIONAL AREA,
NEXT TO THE CASINO AND THE BEACH.
(100 METER DISTANCE)





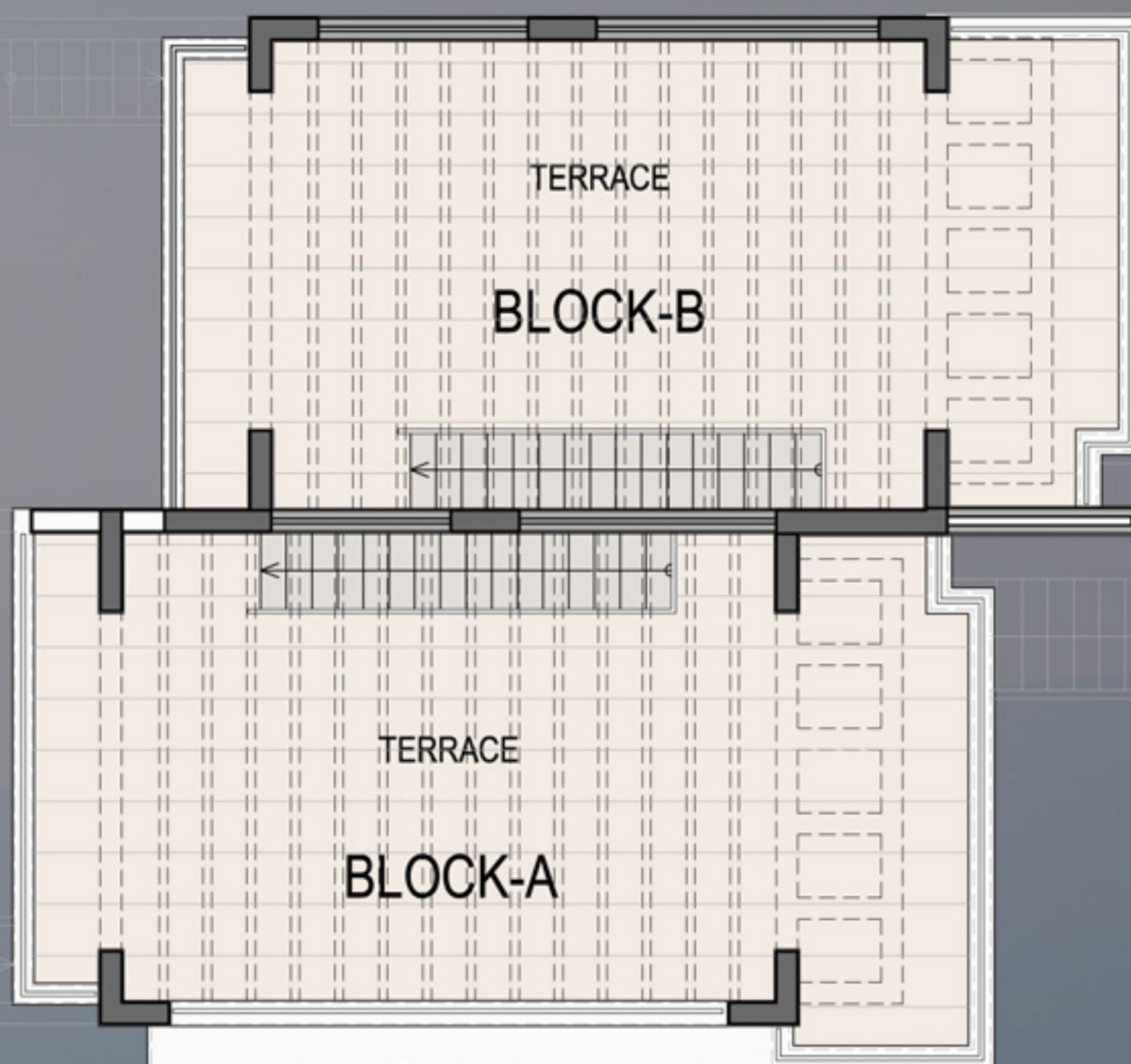
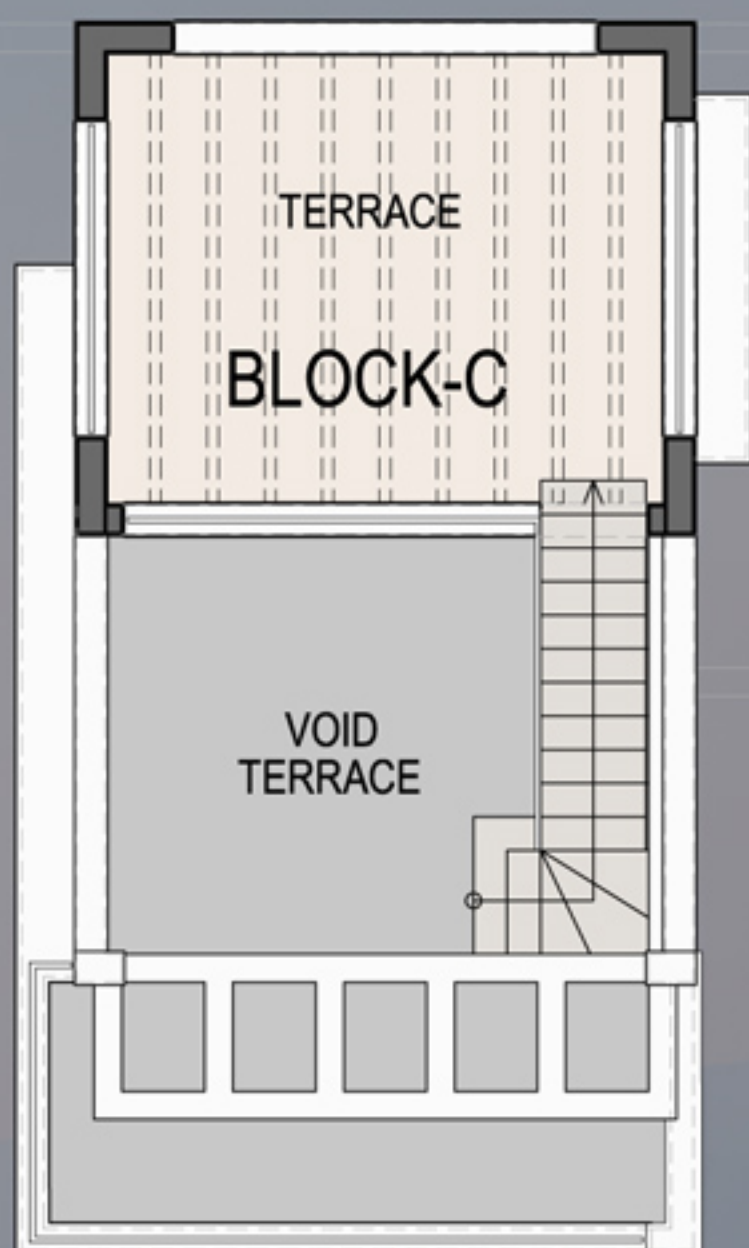
GROUND FLOOR

BLOCK - A
AREA
50.27 sqm (Internal)
17.51 sqm (Balcony)
87.77 sqm (Garden)
BLOCK - B
AREA
50.08 sqm (Internal)
16.42 sqm (Balcony)
61.60 sqm (Garden)
BLOCK - C
AREA
50.44 sqm (Internal)
11.16 sqm (Balcony)
88.87 sqm (Garden)



BASEMENT FLOOR

BLOCK - A
AREA
53.84 sqm
BLOCK - B
AREA
54.08 sqm
BLOCK - C
AREA
52.48 sqm



ROOF FLOOR

BLOCK - A

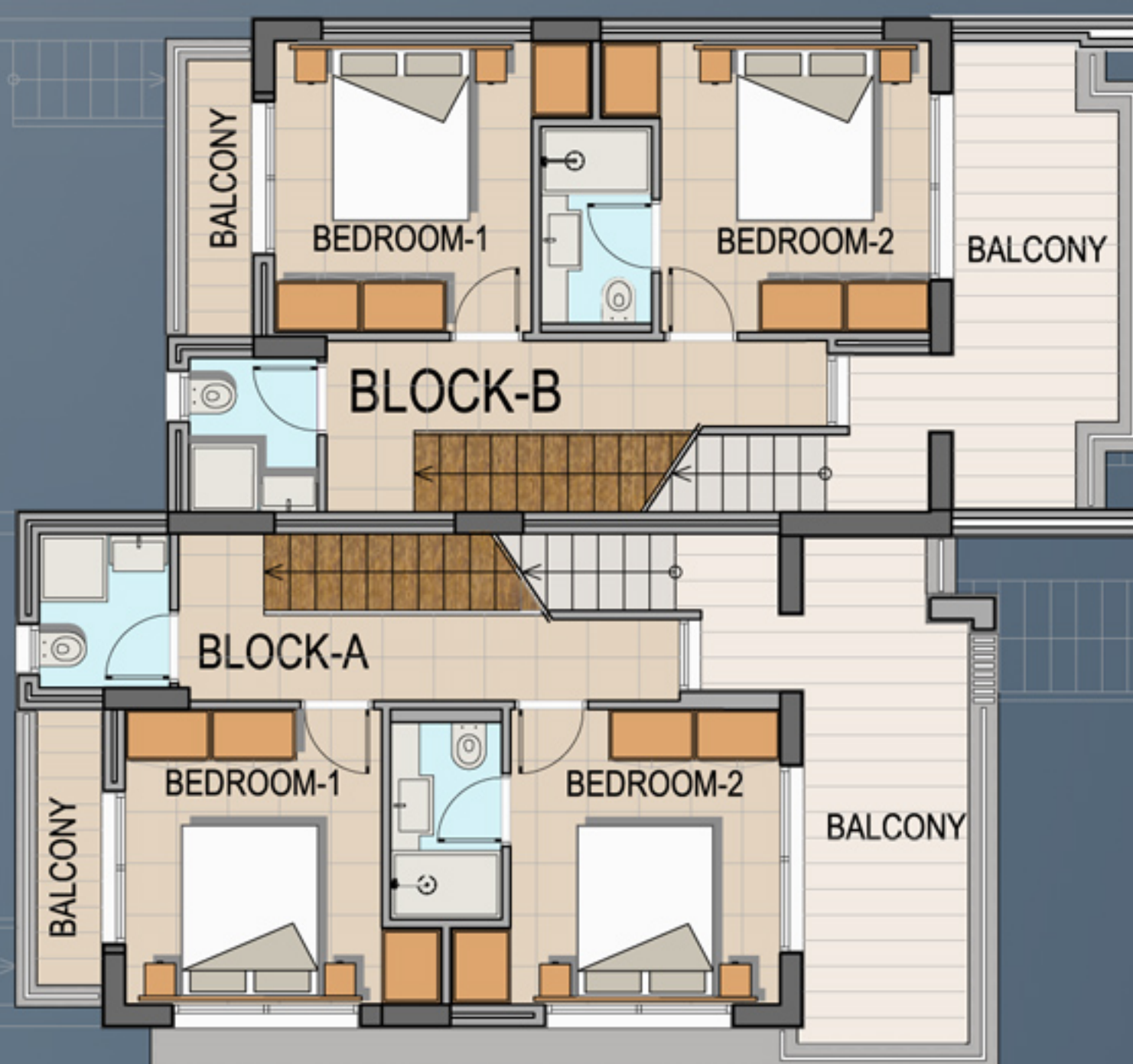
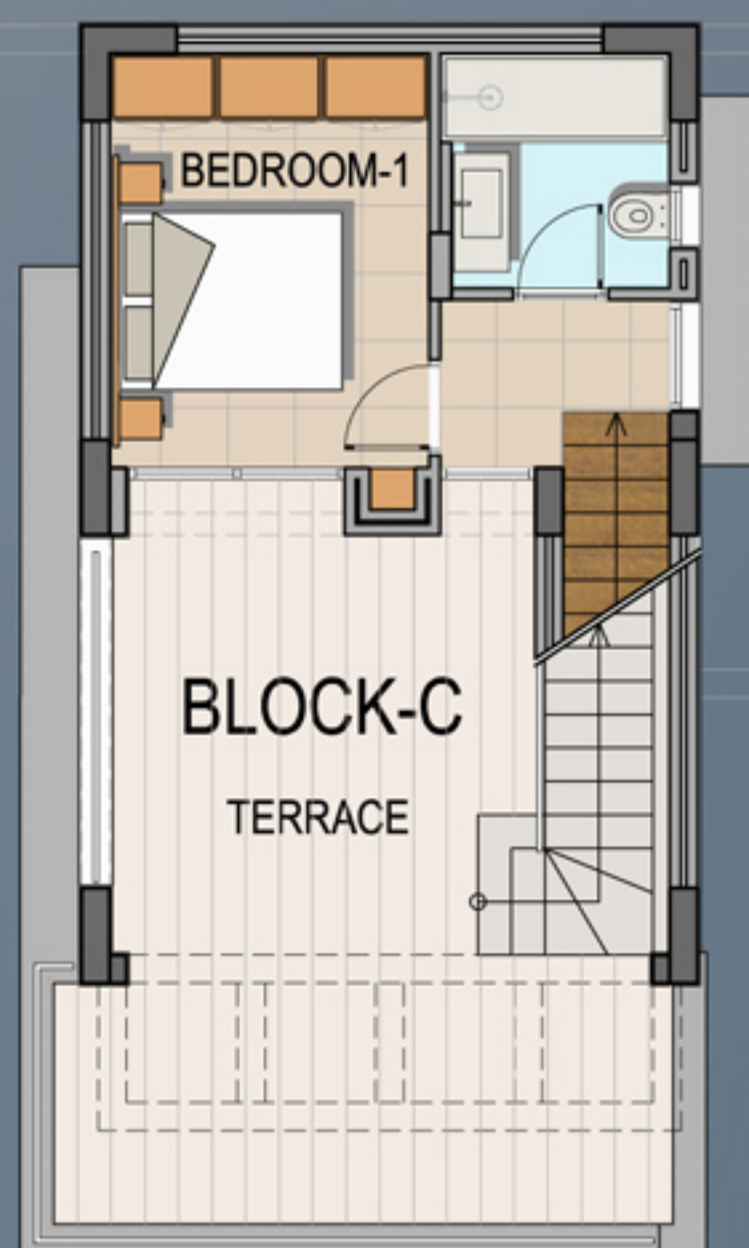
AREA
67.79 sqm (Terrace)

BLOCK - B

AREA
66.73 sqm (Terrace)

BLOCK - C

AREA
25.03 sqm (Terrace)



FIRST FLOOR

BLOCK - A

AREA
47.95 sqm (Internal)
19.83 sqm (Balcony)

BLOCK - B

AREA
49.69 sqm (Internal)
18.81 sqm (Balcony)

BLOCK - C

AREA
25.02 sqm (Internal)
36.53 sqm (Balcony)

ONLY 55 MINUTES FROM ATHENS AIRPORT BY CAR OR PUBLIC TRANSPORT, YOU WILL REACH LUTRAKI TOURISTIC TOWN, WITH ALL ITS BEACHES AND CORNICE, CASINO, PEDESTRIAN STREETS, CROWDED BY BARS, SHOPS AND RESTAURANTS, FOR THE BEST NIGHTLIFE IN THE AREA. YOU CAN EASILY REACH CORINTH (15 MIN) WITH ALL ITS ACCOMODATION, BANKS, RESTAURANTS & SHOPS.

FOLLOW US ON

BUILDREAM-5



FOR MORE INFORMATION

CONTACT US:

GREECE : +30 6949041547 - 8

LEBANON : +961 71 888 580 

INFO@BUILDREAM-5.COM